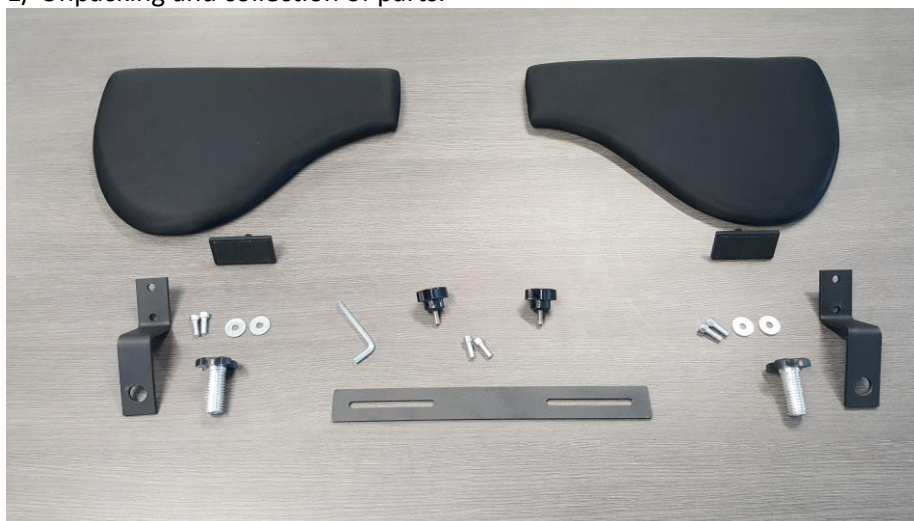




## Manual and assembly instructions for the Forearm Support Dual Comfort

Please find attached the steps to assemble the parts of the Forearm Support Comfort Dual.

1/ Unpacking and collection of parts.

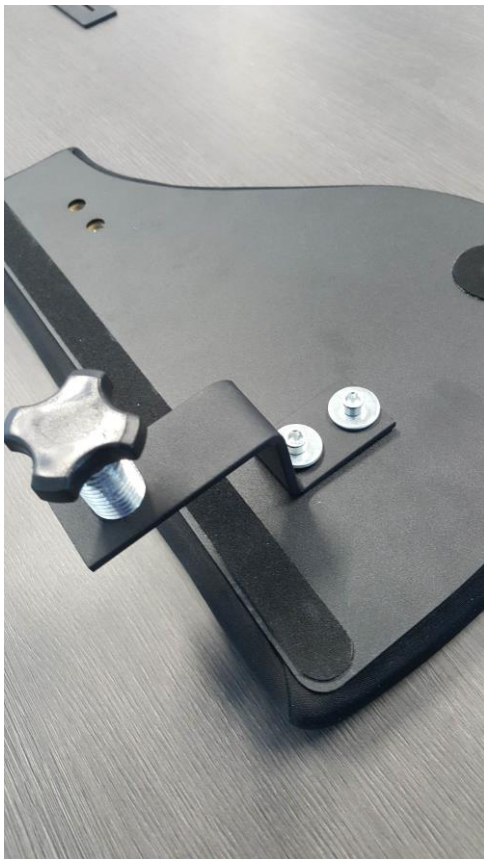


2/ Assembling the fixing of the support. Screw the large screw in the metal fixation as per the photo.





3/ Place the metal fixations over the two holes and tighten the screws to bring everything together.





4/ Perform the same operation on the second fixation. You will get the following result.



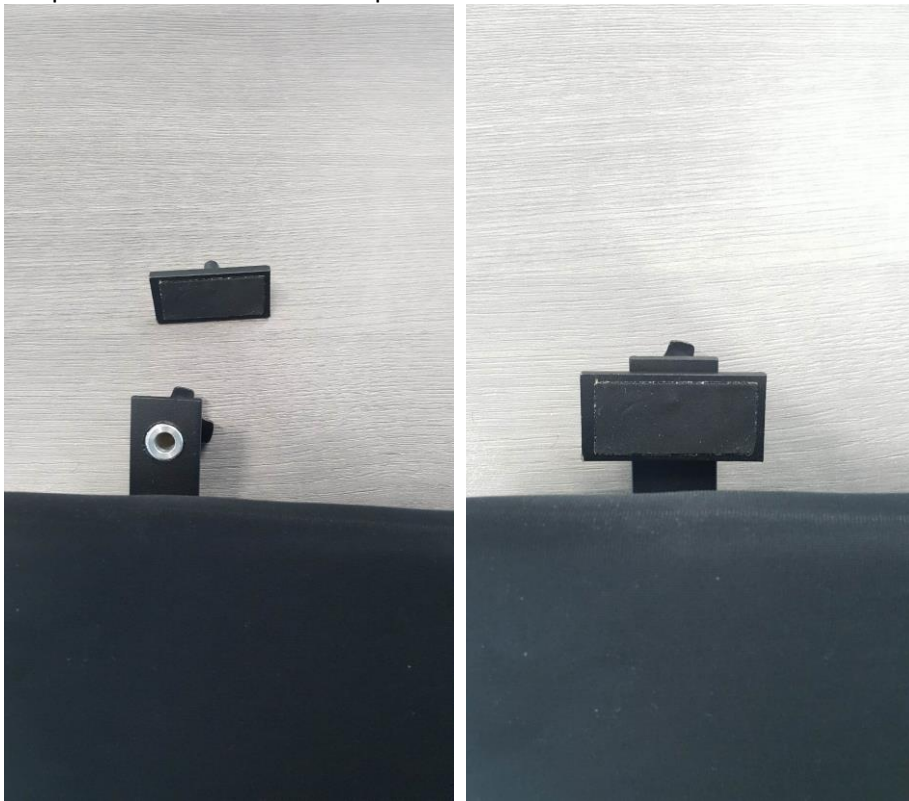
5/ Place the bar as follows.



6/ Place the screws to stabilise the two units as follows



7/ Place the rectangular accessory over the large screw, in the hole provided for this purpose, as per the photo. Perform the same operation on the second fixation.



8/ Following the above manipulations, you will get the following result.





9/ Place the support on the table's edge, and tighten the large screw as in the photo below. Screw until the support is stable. Repeat the same operation on the second fixation.



10/ The Forearm Support Comfort is now in place and ready to be used.

