

UNIMOUSE

Wireless

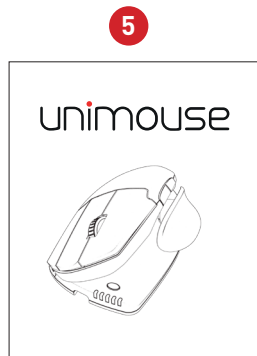
Product Manual



contour 

Box Contents

1. Unimouse
2. Dongle (Wireless receiver)
3. USB 2.0 cable adapter
4. USB to Micro USB cable
5. User Guide



Unimouse Functions



For additional mouse features and specific Mac settings, please download our driver at contourdesign.com/support

* See page 4

Power Switch

The power switch can be found on the underside of the Unimouse. Before using the Unimouse please make sure the power switch is set to the ON position. Turning off the device is only necessary for long-term storage or during travel.



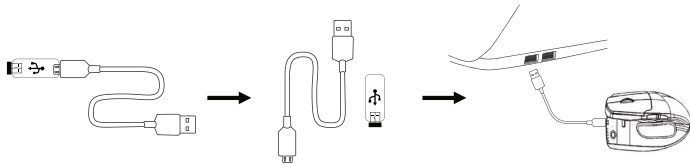
Connecting to a Computer

Plug the wireless receiver or the charging cable into the computer's USB port. Allow your computer a few seconds to automatically install mouse drivers.



Charging

To charge your Unimouse remove the dongle from the extender cable and plug the Micro USB into the Unimouse. Your Unimouse will charge in 2 hours and you may continue to use your Unimouse while it charges.



Middle Click to Double Click

Unimouse comes with middle click as the default setting. To change the middle click function to double click, hold down the cursor speed button and the middle click button at the same time. To switch back, repeat the same command.

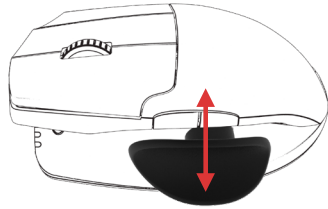
Middle click / Double click



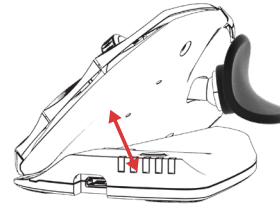
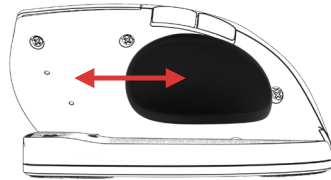
Adjustable Features

Unimouse has 4 key points of articulation. We encourage you to explore a variety of positions while using your Unimouse. For more details regarding adjustability, please refer to the Adjustability Guide.

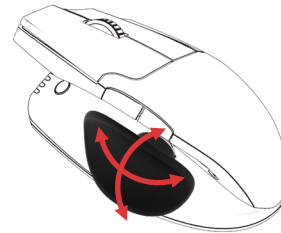
The thumb rest can be extended or collapsed to accommodate different hand sizes.



Slide the thumb support forward or back to accommodate variations in thumb length and grip preference.



Adjust tilt for your desired mousing angle.



The thumb support can be rotated in any direction to adjust to your preferred thumb position.

Pairing

With the Unimouse in close proximity to the dongle, hold left click, right click and the cursor speed buttons at the same time until the LED indicator turns green and pulses twice in succession.



Battery Level

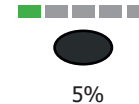
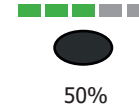
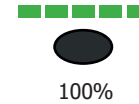
Your Unimouse comes pre-charged and has an expected battery life of up to 3 months with average daily use.*

Unimouse has a built-in rechargeable battery. To see the battery level on your device, press the cursor speed button once. The Unimouse will first display the current cursor speed (DPI), then display the current battery level.

If your Unimouse is running low on battery, the center LED light will start blinking in red.

To charge your battery, plug the charging cable into your Unimouse and connect it to a USB port on your computer (see page 4). The Unimouse will charge in 2 hours and you may use your Unimouse as it charges.

*Battery life may vary based on user and computing conditions.



Change Cursor Speed

Press the cursor speed button to cycle through cursor speeds. There are ten speed selections ranging from slow (800 DPI) to fast (2800 DPI). Speed is indicated by the LED lights as shown.

